

Specifications

Models	Z-34/22 IC 2WD		Z-34/22 IC 4WD	
Measurements	US	Metric	US	Metric
Working height maximum*	40 ft 6 in	12.52 m	40 ft 10 in	12.62 m
Platform height maximum	34 ft 6 in	10.52 m	34 ft 10 in	10.62 m
Horizontal reach maximum	22 ft 3 in	6.78 m	22 ft 3 in	6.78 m
Up and over clearance maximum	15 ft	4.57 m	15 ft 1 in	4.6 m
A Platform length	2 ft 6 in	0.76 m	2 ft 6 in	0.76 m
B Platform width	4 ft 8 in	1.42 m	4 ft 8 in	1.42 m
C Height - stowed	6 ft 7 in	2.00 m	6 ft 9 in	2.06 m
D Length - stowed	18 ft 6 in	5.64 m	18 ft 7 in	5.66 m
E Storage height	7 ft 5 in	2.26 m	7 ft 6 in	2.29 m
A Storage length	13 ft 5 in	4.08 m	13 ft 6 in	4.11 m
A Width	5 ft 8 in	1.73 m	6 ft 1 in	1.85 m
A Wheelbase	6 ft 2 in	1.88 m	6 ft 2 in	1.88 m
A Ground clearance - center	6 in	0.15 m	6.5 in	0.17 m

Productivity

Lift capacity	500 lbs	227 kg	500 lbs	227 kg
Platform rotation	180°		180°	
Vertical jib rotation	139°		139°	
Turntable rotation	355° non-continuous		355° non-continuous	
Turntable tailswing	zero		zero	
Drive speed - stowed	3.0 mph	4.8 km/h	3.0 mph	4.8 km/h
Drive speed - raised**	0.68 mph	1.1 km/h	0.68 mph	1.1 km/h
Gradeability - stowed***	37%		45%	
Turning radius - inside	5 ft 9 in	1.75 m	5 ft 11 in	1.80 m
Turning radius - outside	13 ft 1 in	4 m	13 ft 6 in	4.11 m
Controls	12V DC	proportional	12V DC	proportional
Tires - air-filled	9 x 14.5 in		10 x 16.5 in	rough terrain

Power

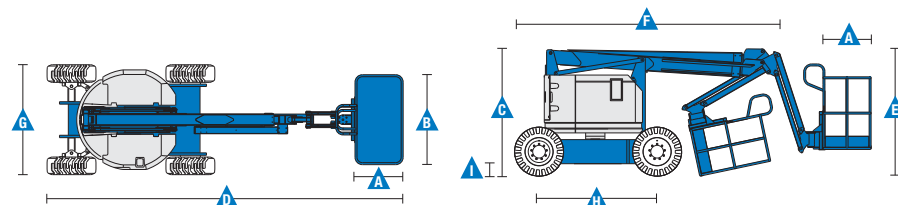
Power source	Tier IV Kubota DF-972 3-cylinder gas/LPG 31 hp (23.1 kW) Tier IV Kubota D-1105 3-cylinder diesel 26 hp (19.4 kW) Tier IV Perkins 403 D11 3-cylinder diesel 26.4 hp (19.7 kW)			
Auxiliary power unit	12V DC		12V DC	
Hydraulic tank capacity	19 gal	71.9 L	19 gal	71.9 L
Fuel tank capacity	9.3 gal	35.2 L	9.3 gal	35.2 L

Weight****

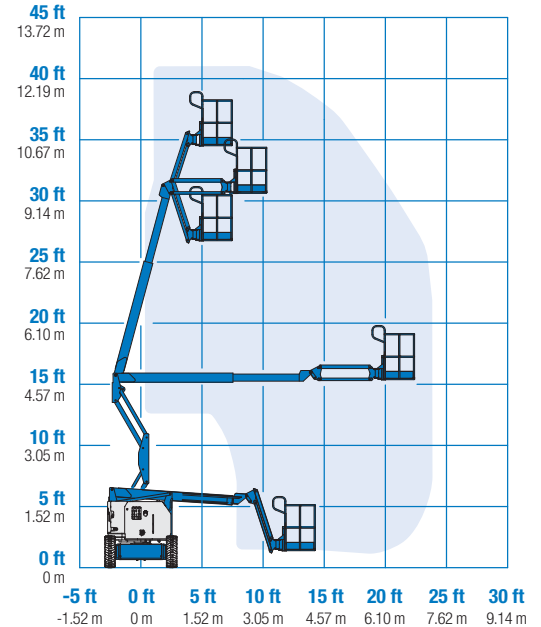
	10,150 lbs	4,604 kg	10,450 lbs	4,740 kg
--	------------	----------	------------	----------

Standards Compliance

ANSI A92.5, CSA B354.4, EN 280, AS 1418.10



Range Of Motion Z-34/22 IC



* The metric equivalent of working height adds 2 m to platform height. U.S. adds 6 ft to platform height.
 ** In lift mode (platform raised), the machine is designed to operate on firm, level surfaces only.
 *** Gradeability applies to driving on slopes. See operator's manual for details regarding slope ratings.
 **** Weight will vary depending on options and/or country standards.

Features

Standard Features

Measurements

Z-34/22 IC 2WD

- 40 ft 6 in (12.52 m) working height
- 22 ft 3 in (6.78 m) horizontal reach
- 14 ft 11 in (4.54 m) up and over clearance
- Up to 500 lb (227 kg) lift capacity

Z-34/22 IC 4WD

- 40 ft 10 in (12.62 m) working height
- 22 ft 3 in (6.78 m) horizontal reach
- 15 ft (4.57 m) up and over clearance
- Up to 500 lb (227 kg) lift capacity

Productivity

- 4 ft (1.22 m) jib with 139° working range
- Self-leveling platform
- Hydraulic platform rotation
- Fully proportional controls
- Drive enable
- AC power cord to platform
- Horn
- Hour meter
- Tilt alarm
- Descent alarm
- 355° non-continuous turntable rotation
- Locking turntable covers
- Zero tailswing and front arm swing
- Two speed wheel motors

Power

- 12 V DC auxiliary power

Easily Configured To Meet Your Needs

Platform Options

- Steel 4 ft 8 in (1.42 m) (standard)
- Steel 3 ft 10 in (1.17 m)

Jib

- 4 ft (1.22 m) jib boom

Engine Options

- Tier IV Kubota DF-972 3-cylinder gas/LPG 31 hp (23.1 kW)
- Tier IV Kubota D-1105 3-cylinder diesel 26 hp (19.4 kW)
- Tier IV Perkins 403 D11 3-cylinder diesel 26.4 hp (19.7 kW)

Drive Options

- 2WD
- 4WD

Tire Options

- Industrial air-filled*
- Rough terrain air-filled
- Industrial foam-filled*
- Industrial non-marking air or foam-filled*
- Rough terrain foam-filled
- High flotation air-filled (4WD only)
- Sealant treated air-filled

Options & Accessories

Productivity Options

- Platform swing gate
- Half-mesh platform inserts with swing gate
- Platform top auxiliary rail
- Air line to platform
- Fire resistant hydraulic oil
- Biodegradable hydraulic oil
- Aircraft protection package**
- Hostile environment package
- Tool tray
- Fluorescent tube caddy
- Pipe cradle (pair)
- Alarm package
- Platform work lights
- Lockable platform control box cover

Power Options

- Engine gauge package
- AC Generator Packages (110 V / 60 Hz - 220 V / 50 Hz, 2000 W)
- Cold Weather Package
- LPG tank 33.5 lb (15.19 kg) capacity



* 2WD only
** Reduces platform weight capacity to 440 lbs

Genie United States

18340 NE 76th Street
P.O. Box 97030
Redmond, Washington 98073-9730
Telephone +1 (425) 881-1800
Toll Free in USA/Canada +1 (800)-536-1800
Fax +1 (425) 883-3475

Genie Europe

The Maltings
Wharf Road
Grantham NG31 6BH
UK
Telephone +44 (0)1476 584333
Fax +44 (0)1476 584334
Email: AWP-InfoEurope@terex.com

Distributed By:

Effective Date: February, 2012. Product specifications and prices are subject to change without notice or obligation. The photographs and/or drawings in this document are for illustrative purposes only. Refer to the appropriate Operator's Manual for instructions on the proper use of this equipment. Failure to follow the appropriate Operator's Manual when using our equipment or to otherwise act irresponsibly may result in serious injury or death. The only warranty applicable to our equipment is the standard written warranty applicable to the particular product and sale and we make no other warranty, express or implied. Products and services listed may be trademarks, service marks or trade names of Terex Corporation and/or their subsidiaries in the USA and many other countries. Genie is a registered trademark of Terex South Dakota, Inc. © 2012 Terex Corporation.