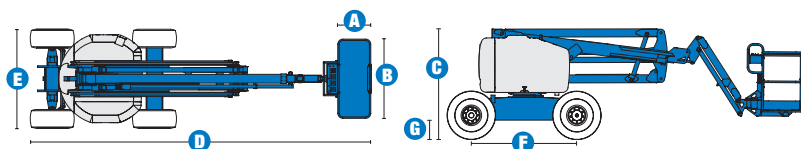


# Specifications



## MODEL Z™-51/30J RT

MEASUREMENTS	Metric	US
Working height maximum*	17.62 m	57 ft 3 in
Platform height maximum	15.62 m	51 ft 3 in
Horizontal reach maximum	9.25 m	30 ft 4 in
Up-and-over clearance maximum	7.42 m	24 ft 4 in
A Platform length	76 cm	2 ft 6 in
B Platform width	1.83 m	6 ft
C Height - stowed	2.16 m	7 ft 1 in
D Length - stowed	7.50 m	24 ft 6 in
E Width	2.29 m	7 ft 6 in
F Wheelbase	2.03 m	6 ft 8 in
G Ground clearance - centre	39 cm	1 ft 3.5 in

## PRODUCTIVITY

Lift capacity	227 kg	500 lbs
Platform rotation	160°	160°
Vertical jib rotation	135° (+78°/-57°)	
Turntable rotation	355° non-continuous	
Turntable tailswing	zero	zero
Drive speed - stowed	8 km/h	5 mph
Drive speed - raised**	30 cm/s	1 ft
Gradeability - 4WD - stowed***	45%	45%
Turning radius - inside	1.70 m	5 ft 6 in
Turning radius - outside	4.50 m	14 ft 9 in
Controls	12 V DC proportional	
Tyres	355/55 D625 foam filled	

## POWER

Power source	Deutz D2011 L03i 3 cylinder diesel 48 hp (35.8 kW)	
Auxiliary power unit	12 V DC	12 V DC
Hydraulic tank capacity	90.9 L	24 gal
Fuel tank capacity	64.4 L	17 gal

## SOUND & VIBRATION LEVELS

Sound pressure level (ground workstation)	86 dBA	86 dBA
Sound pressure level (platform workstation)	79 dBA	79 dBA
Vibration	<2.5 m/s <sup>2</sup>	<8 ft 2 in/s <sup>2</sup>

## WEIGHT\*\*\*\*

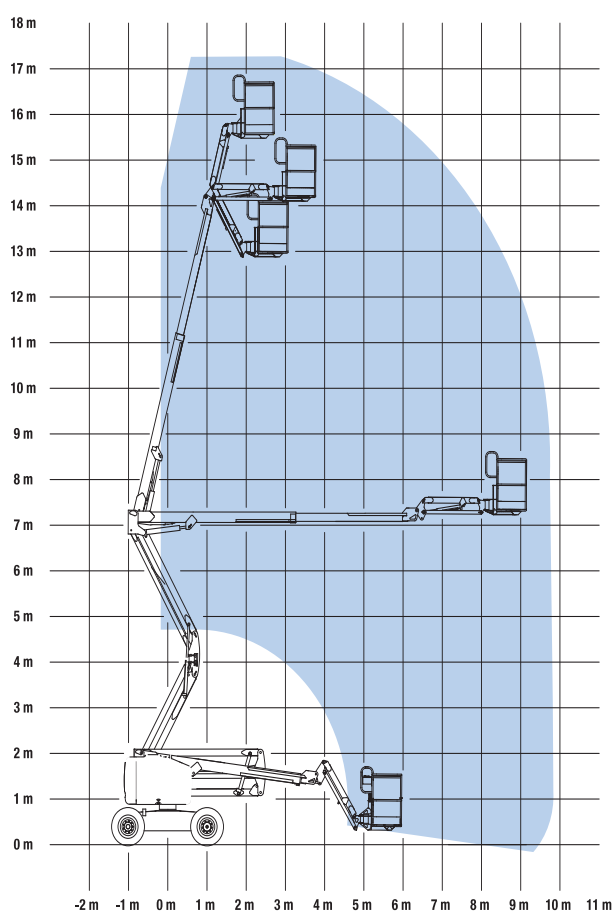
	7,212 kg	15,900 lbs
--	----------	------------

## STANDARDS COMPLIANCE

EU Machinery Directive 2006/42/EC  
 EU Standard EN280:2001, A2:2009  
 EMC Directive 2004/108/EC EN 61000-6-2, EN 61000-6-4  
 EU Noise Directive 2000/14/EC EN ISO 3744

\* The metric equivalent of working height adds 2 m to platform height. U.S. adds 6 ft to platform height.  
 \*\* In lift mode (platform raised), the machine is designed to operate on firm, level surfaces only.  
 \*\*\* Gradeability applies to driving on slopes. See Operator's Manual for details regarding slope ratings.  
 \*\*\*\* Weight will vary depending on options and/or country standards.

## RANGE OF MOTION Z™-51/30J RT



## Features

### EASILY CONFIGURED TO MEET YOUR NEEDS

#### PLATFORM OPTIONS

- Steel 1.83 m (6 ft) (standard)

#### JIB

- 1.52 m (5 ft) jib boom

#### POWER

- Deutz Diesel D2011 L03i 48 hp (35.8 kW)

#### DRIVE

- 4x4

#### AXLE

- Active oscillating axle

#### TYRE OPTIONS

- Rough terrain foam-filled tyres (standard)
- Rough terrain non-marking foam-filled tyres



### STANDARD FEATURES

#### MEASUREMENTS

- 17.62 m (57 ft 3 in) working height
- 9.25 m (30 ft 4 in) horizontal reach
- 7.42 m (24 ft 4 in) up-and-over clearance
- Up to 227 kg (500 lb) lift capacity

#### PRODUCTIVITY

- Self-levelling platform
- Hydraulic platform rotation
- Fully proportional controls
- Drive enable system
- AC power to platform
- Horn
- Hour meter
- Tilt alarm
- Descent alarm
- Alarm package (flashing beacon & travel alarm)
- 355° non-continuous turntable rotation
- Zero tailswing
- Positive traction drive
- Thumb rocker steer joystick
- Certified load sensor

#### POWER

- All engines are emissions compliant
- 12 V DC auxiliary power
- Engine protection package
- Intake air heater

### OPTIONS & ACCESSORIES

#### PRODUCTIVITY

- Platform swing gate
- Half-mesh platform inserts with swing gate
- Platform top auxiliary rail
- Air line to platform
- Power to platform (incl. plug, socket and ground fault interrupt leakage on request)
- Low temperature cut-out module
- Biodegradable hydraulic oil
- Tool tray
- Fluorescent tube caddy\*
- Platform work lights
- Lockable platform control box cover

#### POWER

- Engine gauge package (oil pressure, temperature)
- Engine heater
- Refinery kit (spark arrestor and electric or mechanical Chalwyn valve)
- AC generator packages (110V/60Hz or 220V/50Hz)

\*Available aftermarket only

#### Enquiries from Europe:

Tel: +31 165 519 361  
Fax: +31 165 511 148  
Email: AWP-InfoEurope@terex.com

#### Offices:

##### France

Tel: +33 (0)2 37 26 09 99  
Fax: +33 (0)2 37 26 09 98

##### Germany

Tel: +49 (0)4221 491 810  
Fax: +49 (0)4221 491 820

##### Spain

Tel: +34 93 572 50 90  
Fax: +34 93 572 50 91

##### Scandinavia

Tel: +46 31 57 51 00  
Fax: +46 31 57 51 04

##### The Netherlands

Tel: +31 165 519 361  
Fax: +31 165 511 148

##### UK

The Maltings  
Wharf Road  
Grantham NG31 6BH  
UK  
Tel: +44 (0)1476 584333  
Fax: +44 (0)1476 584334

##### Middle East

Tel: +971 4 399 0381  
Fax: +971 4 399 0382  
Email: AWP.Infome@terex.com

##### Russia & CIS countries

Tel: +7 495 660 32 30  
Fax: +7 495 660 32 29  
Email: info@terexrus.ru

#### Corporate Headquarters:

##### United States

18340 NE 76th Street  
P.O. Box 97030  
Redmond, WA  
USA 98073-9730  
Tel: +1 425 881-1800  
Fax: +1 425 883-3475

#### Distributed By: